



Hazel Fold, Queensbury

£550,000

Situated on this highly sought after modern development and perfectly positioned for convenient access to local amenities, this exceptional five bedroom detached residence offers a superb blend of style, comfort and family centred living. Designed with modern lifestyles in mind, the property provides generous, beautifully appointed accommodation that would make an outstanding home for a growing family. The property also benefits from both an EV charger and roof mounted solar panels, enhancing energy efficiency and day to day convenience.

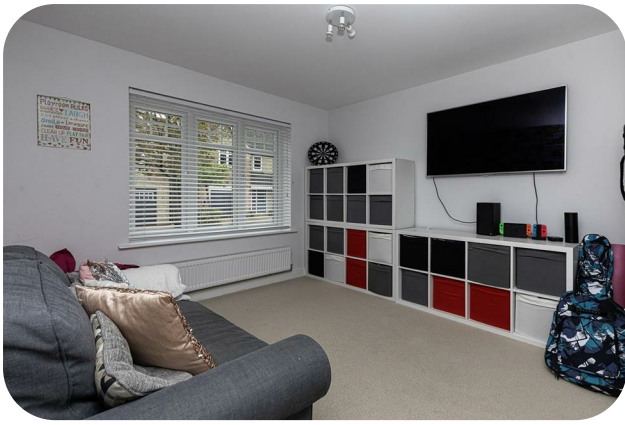
A welcoming reception hall leads into a selection of versatile living spaces, including a spacious lounge and a stunning family living kitchen—an inviting hub of the home ideal for everyday gathering and entertaining. The orangery provides a serene space to unwind, while the utility room, cloakroom and study add further practicality and flexibility.

To the first floor, five well proportioned bedrooms offer space for every member of the household. Two enjoy luxurious en suite facilities, complemented by a stylish four piece house bathroom.

Outside, the property continues to impress. A neatly lawned frontage and side driveway lead to a double detached garage, while the enclosed rear garden—with its lawn and patio area—creates a perfect setting for outdoor dining, children's play, or simply relaxing in the sunshine.

This is a home that offers not just space, but a lifestyle. Internal viewing is strongly recommended to fully appreciate the quality, comfort and family appeal on offer.





Reception Hall

With radiator and impressive staircase to the first floor.

Lounge

20'1" x 15' (6.12m x 4.57m)

With two radiators, window shutters, upvc French doors to rear garden.

Dining/Play Room

13'4" x 10'7" (4.06m x 3.23m)

With radiator.

Dining Kitchen

20' x 14'5" (6.10m x 4.39m)

Modern fitted dining kitchen having a range of wall and base units incorporating stainless steel sink unit, integrated electric oven, five ring gas hob, stainless steel cooker hood, storage cupboard, tiled floor, radiator.

Orangery

Fabulous open plan family space with tiled floor, two velux windows, upvc French doors, bespoke wood shutters to some windows/doors.

Utility Room

With modern wall and base units incorporating space for a fridge freezer, plumbing for auto washer, tiled floor, radiator.

Cloakroom/WC

Modern cloakroom having a low suite wc, wall mounted wash basin, part tiled walls and radiator.

Study

10'9" x 8'10" (3.28m x 2.69m)

With radiator.

First Floor Landing

Galleried landing. With radiator.

Master Bedroom

14'11" max x 9'9" (4.55m max x 2.97m)

With radiator. En-Suite Shower Room & Dressing Area;

En Suite Shower Room

Three piece suite comprising double shower cubicle, low suite wc, pedestal wash basin, part tiled walls and radiator.

En Suite Dressing Area

With built in mirror fronted wardrobes.

Bedroom Two

12'6" x 8'3" (3.81m x 2.51m)

With radiator. En-Suite Shower Room;

En Suite Shower Room

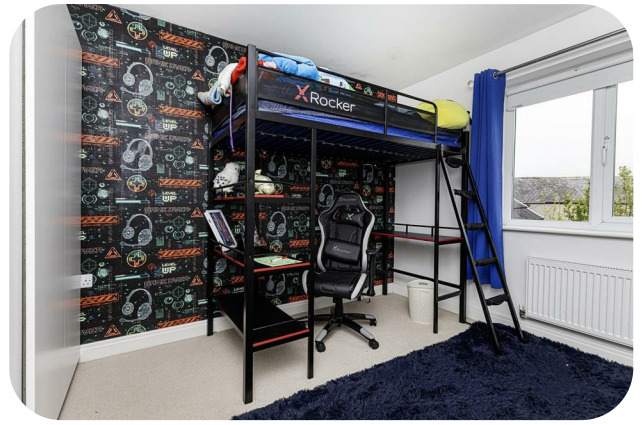
Three piece suite comprising shower cubicle, low suite wc, pedestal wash basin, part tiled walls and radiator.

Bedroom Three

11'9" x 9'10" (3.58m x 3.00m)

With radiator.





Bedroom Four

9'11" x 10'11" (3.02m x 3.33m)
With radiator.

Bedroom Five

10'2" x 12' (3.10m x 3.66m)
With radiator.

Bathroom

Modern four piece bathroom comprising roll top bath, shower cubicle, low suite wc, pedestal wash basin, part tiled walls and radiator.

Exterior

To the outside there is a lawned garden area to the front, driveway to the side leading to a double detached garage, together with an enclosed lawned and patio garden to the rear.

Directions

From our office on Queensbury High Street head towards Russell St, continue to follow A647 for 0.6 miles, turn left onto Hill End Ln, continue straight onto Hazel Hurst Grove, left onto Hazel Fold and the property will be seen displayed via our For Sale board.

TENURE

FREEHOLD

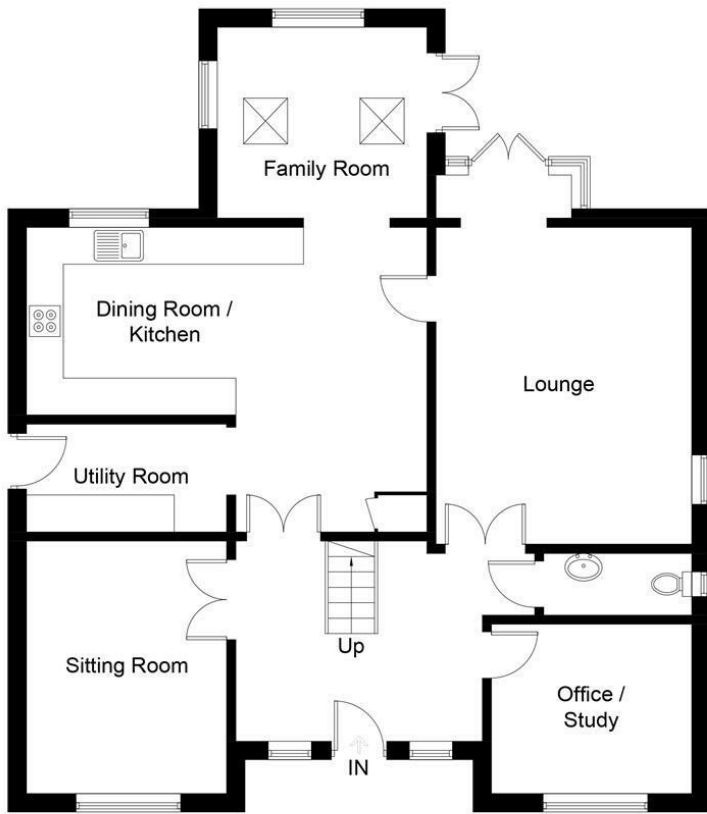
Council Tax Band

F / Bradford

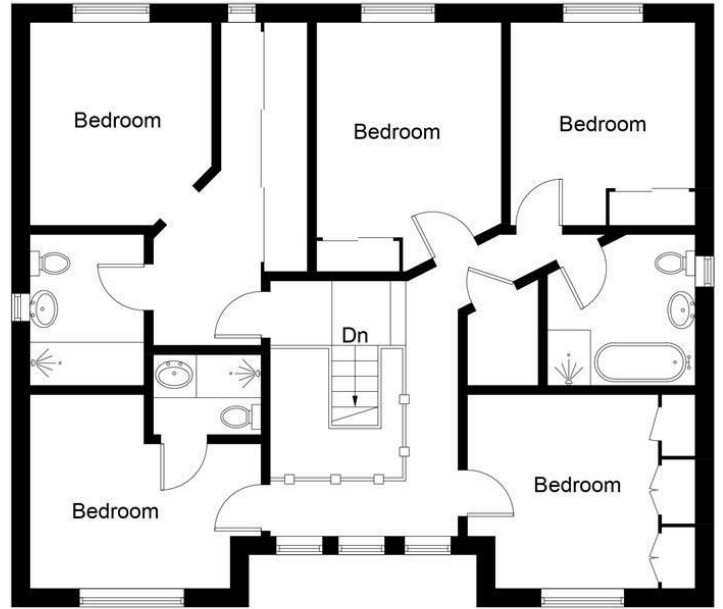


Hazel Fold, BD13

Approximate Gross Internal Area = 205.1 sq m / 2208 sq ft

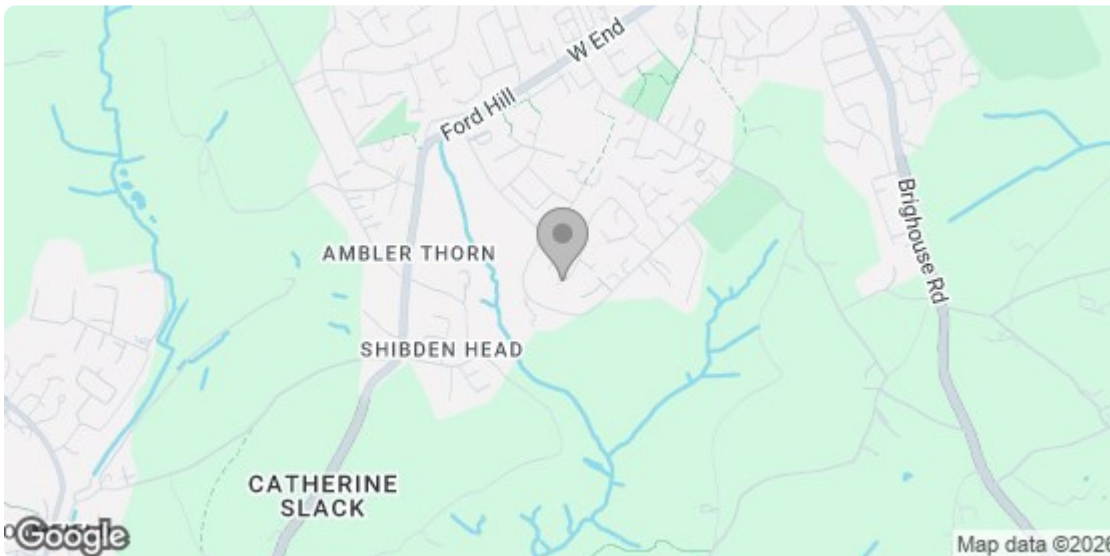


Ground Floor



First Floor

Illustration for identification purposes only, measurements are approximate, not to scale. Fourlabs.co © (ID1298860)



Energy Efficiency Rating		Current	Potential
Very energy efficient - lower running costs			
(92 plus) A		94	94
(81-91) B			
(69-80) C			
(55-68) D			
(39-54) E			
(21-38) F			
(1-20) G			
Not energy efficient - higher running costs			
England & Wales		EU Directive 2002/91/EC	
Environmental Impact (CO₂) Rating			

Agent Notes & Disclaimer We endeavour to make our particulars fair, accurate and reliable. The information provided does not constitute or form part of an offer or contract, nor may it be regarded as representation. All interested parties must verify accuracy and your solicitor must verify tenure/lease information, fixtures & fittings and, where the property has been extended/converted, planning/building regulation consents. All dimensions are approximate and for guidance only, as are floorplans which are not to scale, and their accuracy cannot be confirmed. Reference to appliances and/or services does not imply that they are necessarily in working order or fit for purpose. We strongly advise prospective buyers to commission their own survey or service reports before finalising their offer to purchase. Money Laundering Regulations Intending purchasers will be asked to produce identification and proof of finance. We would ask for your co-operation in order that there will be no delay in agreeing a sale. We are covered and members of The Property Ombudsman.

8 The Green, Idle, Bradford, West Yorkshire, BD10 9PR Tel 01274 619999 email idle@sugdensesstates.co.uk
 44 High Street, Queensbury, Bradford, West Yorkshire, BD13 2PA Tel 01274 888998 email queensbury@sugdensesstates.co.uk
 13 Bradford Road, Cleckheaton, BD19 5AG Tel 01274 905905 email cleckheaton@sugdensesstates.co.uk

website www.sugdensesstates.co.uk



Sugden Properties Ltd trading as Sugdens. Registered office 8 The Green, Idle, Bradford, West Yorkshire, BD10 9PR. Reg No. 8180915

